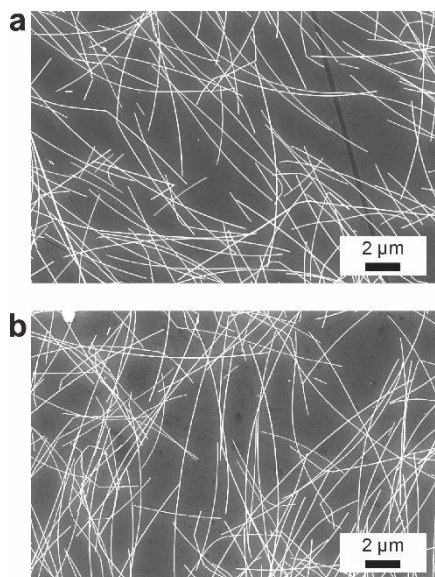


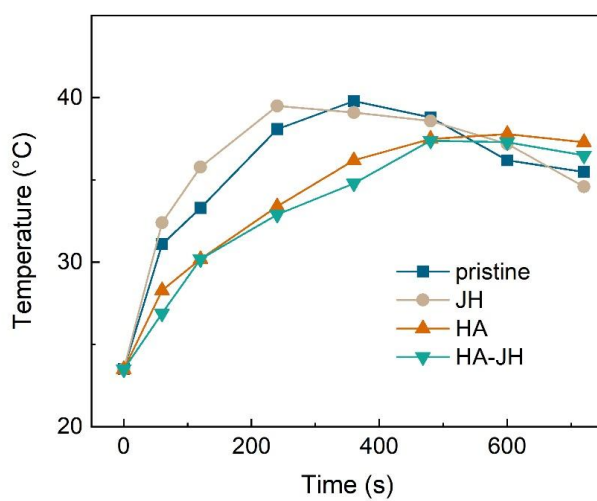
## Supplementary information

# Engineering junction contact states for selective Joule sintering and current distribution control in flexible silver nanowire electrodes

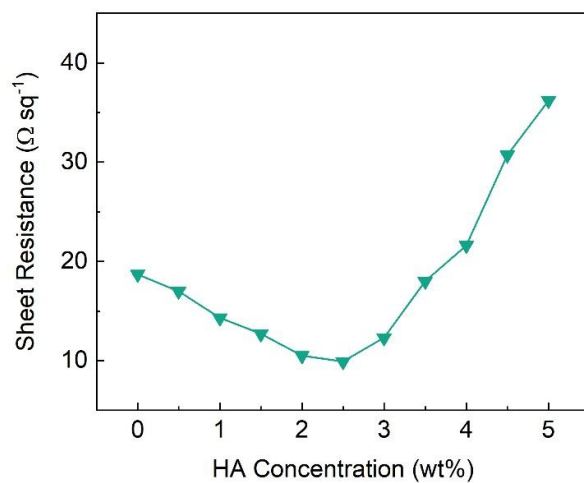
Mahar Sheeraz Khan, Chao Wen, Zhi-YuanDeng, Jia-Liang Zhang, Jing-De Chen, Hao Ren, Song-Jie Zhou, Yan-QingLi, Jian-XinTang



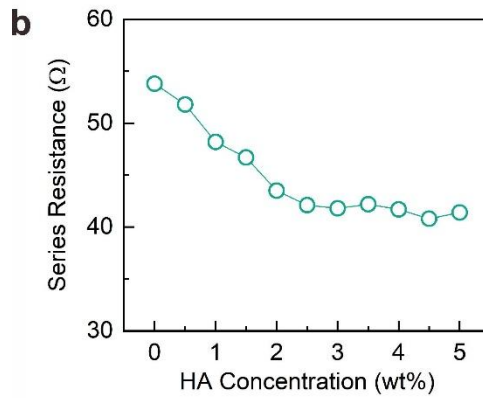
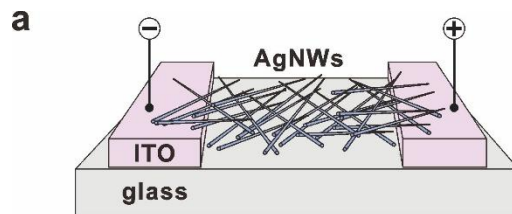
**Figure S1.** SEM image of a) pristine AgNWs and b) HA AgNWs.



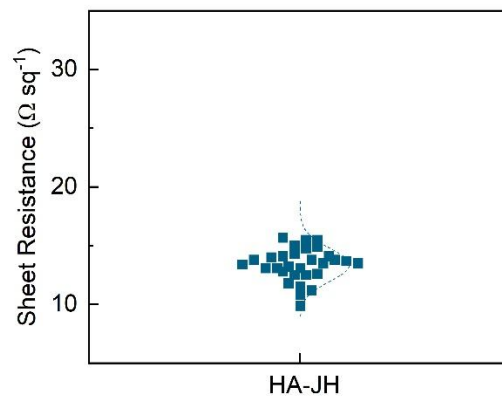
**Figure S2.** JH duration-dependent temperature profiles of various electrodes monitored using thermocouple.



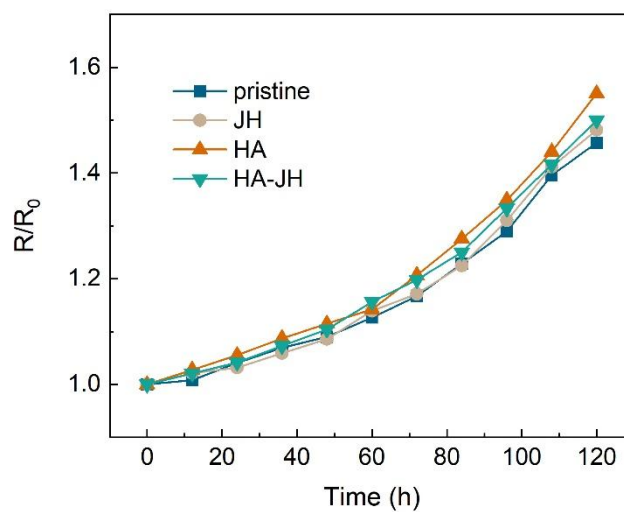
**Figure S3.** Sheet resistance of HA-JH AgNWs electrode against HA concentration.



**Figure S4.** a) Schematic measurement of series resistance of AgNWs. b) Series resistance of AgNWs HA-JH AgNWs electrode against HA concentration.



**Figure S5.** The sheet resistance static of HA-JH AgNWs measured in glove-box.



**Figure S6.** Sheet resistance ( $R/R_0$ ) degradation of electrodes aging at 25 °C and 50% RH.

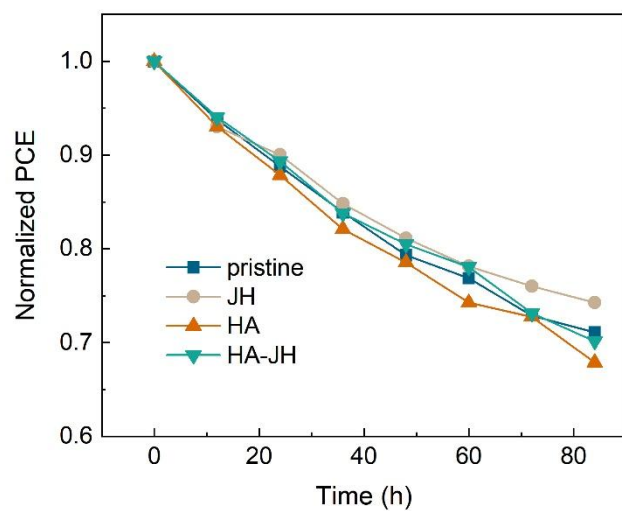


Figure S7. PCE degradation of unencapsulated FOSCs aging at 25 °C and 50% RH.